



FIGURE 8

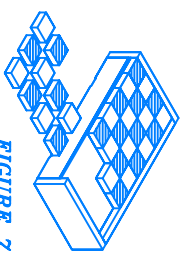


FIGURE 7

Directions (chess board)

- 1) Lay out your material as suggested in the material layout (Fig 1), Draw out all parts exactly as illustrated in cutting diagram (Fig 2), including the letter designations, in pencil. Ensure to leave a small space between cut lines to allow for the width of the saw. Before cutting, double check all measurements to ensure they are correct. Always cut on the waste side of the line. When you cut through a piece, cut on only the top edge of the wood. Do not cut straight (or leave uncutted), and half in a dark stain and allow to dry before proceeding.

- 2) Stand the two pieces D back to back and place the hinges on top. 4" locations and mortise out the pieces with a chisel so that the hinges fit in flush as shown (Fig 3). Attach the two hinges to H as shown (Fig 4) with small hinge screws and drill a finger hole as shown. Trace the outline of your chessmen on two of the pieces M and carefully chisel out the holes. Further, turn the holes with a sharp knife so that the men will fit snugly. If you are not using our chessmen, you may have to use a jig saw as a chisel is not the best thing on rounded edges. Also, the placements of pieces F, M and L are calculated so that our chessmen fit, you will have to adjust them if you are using other chess pieces.

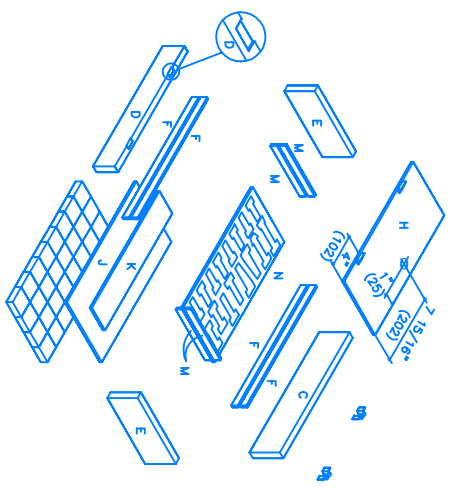
- 3) Blunt the ends of the nails before nailing in the following step as it will prevent the wood from splitting. Build the box M as shown (Fig 5) by first gluing and nailing the sides C, D and E together with 1 1/4" finishing nails. Note that the spacing in this figure is different than in Fig 5. Glue and nail in the "bottom" pieces G and L, exactly 1" from the "bottom" of the box, with 3/4" finishing nails. Turn the box over, glue the exposed edges of M and F, and place piece J in position. Toe nail piece J with 3/4" finishing nails. Turn the box back over and glue and toe nail in piece K with 3/4" nails, flush with D. Piece K is a spacer for the pawns as they are 1/4" smaller in depth than the major pieces. Glue and toe nail in a "cutout piece M with 3/4" finishing nails. Attach piece H to the inside edge of D with small hinge screws. When closed, piece H should be flush with pieces F and M.

- 4) Blunt the ends of the nails before nailing in the following step as it will prevent the wood from splitting. Build the box 2 as shown (Fig 6) by first gluing and nailing the sides C, D and E together with 1 1/4" finishing nails. Note that the spacing in this figure is different than in Fig 5. Glue and nail in the "bottom" pieces G and L, exactly 1" from the "bottom" of the box, with 3/4" finishing nails. Turn the box over, glue the exposed edges of G and L, and place piece J in position. Toe nail piece J with 3/4" finishing nails. Turn the box back over and nail in the uncured piece M with 3/4" nails. Glue and nail piece K on the uncured piece M with 3/4" nails. Piece K is a spacer for the pawns as they are 1/4" smaller in depth than the major pieces. Glue and nail in the upper pieces M and F with 3/4" finishing nails. Toe nail in the upper pieces M and F with 3/4" finishing nails. Glue and toe nail in the "cutout piece with 3/4" finishing nails. Ensure that the open cutouts are above piece K. Be sure to set all nails.

- 5) Turn the two boxes over and dry fit 2" squares on face J, trim if necessary. Lay a film of glue on the exposed face of J. Lay in the board squares as shown (Fig 7), wipe off any excess glue forced up between the cracks, and place a heavy object on the squares to hold them in place. Allow the squares to dry overnight.
- 6) Fill nail holes in outside of box, sand the project and apply a final finish according to the manufacturer's instructions.
- 7) Attach the two sides of the box together with the hinges, and attach the suitcase latches as shown (Fig 8). Glue felt to both sides of the board. After letting it dry for an hour or so, place the pieces in the box. After they are ready to go, glue another layer of felt over the board. They rotate and try again. Two layers of the most should do the trick.

On Materials

Use top quality wood for this project as the quality will show when the project is finished. We suggest #1 clear pine for the light wood, and walnut for the dark, although you could use even more exotic types of wood if desired. If you wish you could use #1 clear pine throughout and use a dark stain to simulate a darker wood.



(BOX 1)

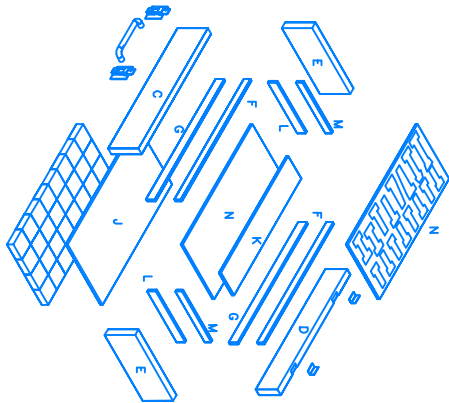
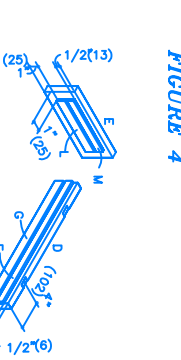


FIGURE 2



(BOX 1)



(BOX 2)



FIGURE 5

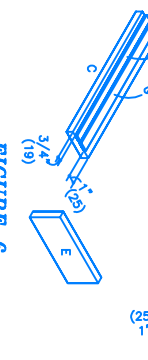
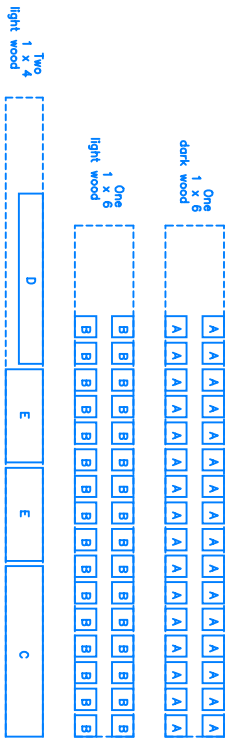
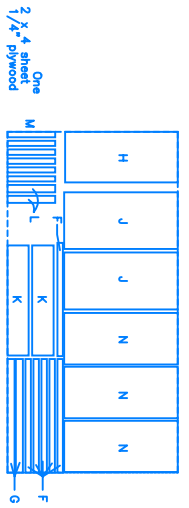


FIGURE 6



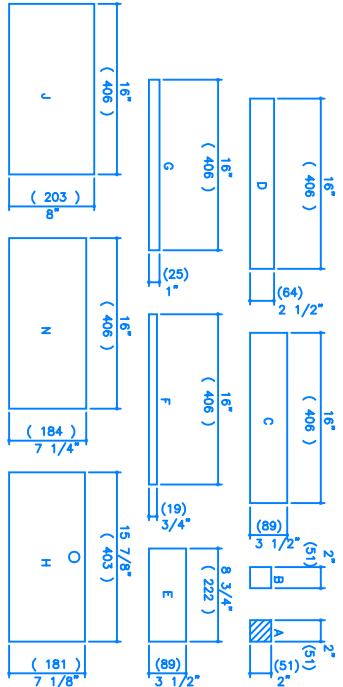
Two 1 x 4 light wood



One 2 1/4\"/>

MATERIALS LAYOUT

FIGURE 1



CUTTING DIAGRAM

FIGURE 2

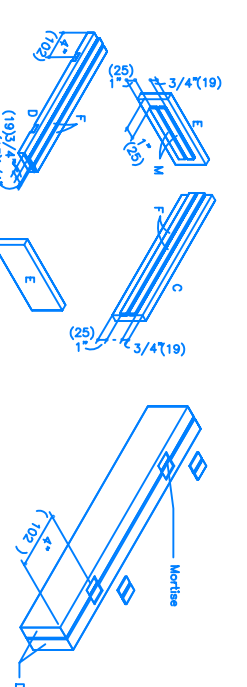


FIGURE 3